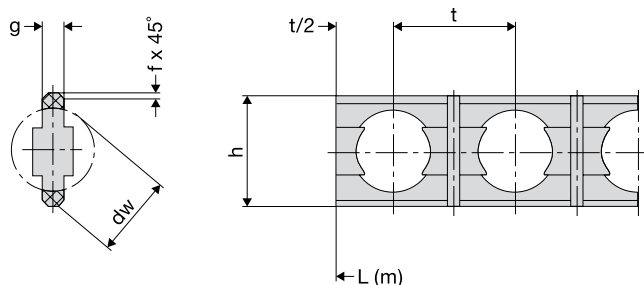


Standard Cages

Strip cages of the LKB type



Cage size	d _w		Dimensions				Order no. (bulk stock)
	mm	inch	h	g	t	f	
LKB5	5.0	3/16	7.6	1.5	7.5	0.4	78916A
LKB6	6.0		8.6	1.6	9.2	0.4	78917A
LKB8	8.0	5/16	10.6	2.0	12.0	0.6	78918A
LKB9.5	9.5	3/8	12.6	2.5	14.0	0.7	78920A
LKB10	10.0		13.2	2.5	14.0	0.7	78921A
LKB11	11.0		13.2	2.5	14.0	0.7	78922A
LKB12	12.0		15.0	2.5	16.0	0.7	78923A
LKB15	15.0		18.6	3.0	18.6	0.7	78924A
LKB16	16.0		19.6	3.0	20.0	0.7	78925A
LKB20	20.0	25/32	24.2	3.5	26.0	0.7	78926A

Material: PA12

The strip cage is segmented into the required lengths and supplied ready for use with balls. The number of required balls is calculated by:

$$Z = \left[\frac{\varnothing KK \cdot \pi}{t} \right] - 1$$

Z = number of balls
 $\varnothing KK$ = ball pitch diameter
 t = ball distribution (tolerance ± 0.2)

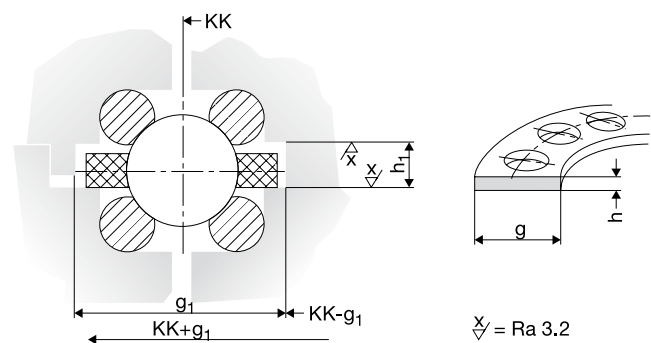
The number of segments depends on the bearing diameter and the ball size. Guide values:

$\varnothing KK$ mm	< 200	200-399	400-799	800-1500
Number of segments	3-4	4-6	6-8	8-12

The strip cage can also be ordered as a one-piece for special applications.

Special Cages

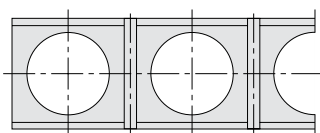
Flat cages of laminated cloth, non-corrosive, brass



d _w mm	h x g mm	h ₁ x g ₁ mm	Order no.
5.0	2 x 10	2.7 x 13	on request
6.0	2 x 12	2.7 x 15	
8.0	3 x 15	4.0 x 18	
9.0	3 x 16	4.0 x 18	
12.0	4 x 20	5.5 x 23	
16.0	5 x 26	6.5 x 30	
20.0	6 x 31	7.5 x 35	
25.0	8 x 38	10.0 x 43	
30.0	8 x 45	10.0 x 50	
40.0	12 x 56	14.0 x 61	
50.0	15 x 80	17.5 x 88	

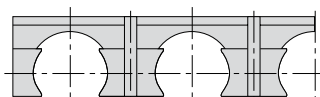
Material: laminated cloth, brass, non-corrosive

Strip cages of laminated cloth, non-corrosive, brass



Use of a flat cage is mandatory at temperatures over 100 °C and for ball diameters greater than 20 mm. Special solutions, such as complete corrosion protection or radiation adjustment, are also available.

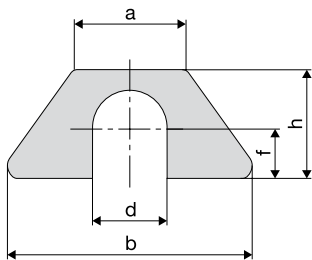
Comb cages



Special cages in the form of strip or comb cages are available for special applications with regard to environmental influences or mounting space requirements.

Franke offers materials like plastic, non-corrosive steel, brass, Teflon etc.

Washers

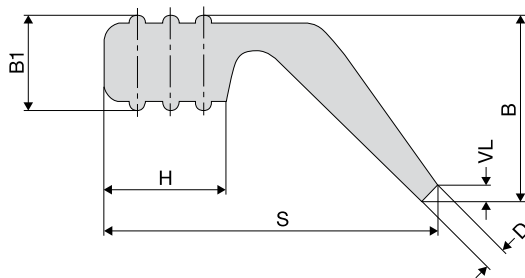


Adjustment between the divided inner or outer rings is simplified by washers for larger bearings or bearing elements. The washers are made of non-corrosive sheet steel. A theoretical begin column of 0.5 mm is recommended in the construction design for adjustment.

Size	Dimensions mm				
	a	b	d	f	h
M 6	11.0	24.4	7	5	11.0
M 8	14.7	34.2	9	6	13.5
M10	16.4	42.3	11	7	16.0
M12	20.3	46.0	13	8	18.0
M16	25.4	54.0	17	11	24.0

Gauge mm	Order no.							
	0.025	0.1	0.15	0.2	0.25	0.3	0.5	1.0
M 6	79015A	79034A	79035A	79036A	79037A	79038A	79039A	79040A
M 8	79041A	79023A	79042A	79000A	79026A	79043A	79044A	79045A
M10	79046A	79012A	79010A	79011A	79047A	79048A	79049A	79050A
M12	79118A	79051A	79052A	79053A	79054A	79055A	79056A	79065A
M16	79119A	79024A	79066A	79057A	79058A	79059A	79060A	79061A

Seals



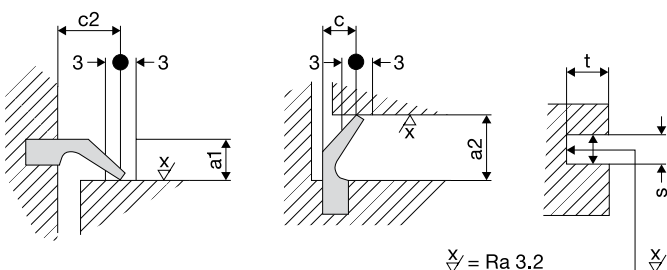
The bearing assemblies are equipped with the S10 collar seal as standard. Temperature: $-30\text{ }^{\circ}\text{C}$ to $+80\text{ }^{\circ}\text{C}$ (NBR). Max. peripheral speed: 5 m/s.

For sealing the construction (e.g. for use as a bearing element) seals can be ordered as bulk stock. The point of impact is then glued with the adhesive Loctite 401®.

Profile	Dimensions mm				Material	Preload mm	Weight kg/m	Order no.
S	H	$B^{\pm 0.3}$	$B1^{\pm 0.2}$	D		VL ¹		
10	4.2	5.3	3.0	0.8	Perbunan 70NBR/221	0.5...1.5	0.026	09080
10	4.2	5.3	3.0	0.8	Viton	0.5...1.5	0.026	46062
15	5.5	8.5	4.3	1.0	Perbunan 70NBR/221	0.5...2.0	0.051	09190

¹ depending on bearing assembly (approx. 1 Nm/m seal)

Installation Dimensions



Profile	Installation dimensions mm				Groove dimension mm	
	c	c2	a1	a2	$t^{\pm 0.2}$	$s^{\pm 0.1}$
10	5+1	5.5+1	3.6...4.6	4.3...5.3	4.2	2.8
15	8+1.5	9.0+1.5	6.3...7.7	7.5...9.0	5.5	3.9

Important note: measure seal first, then make groove.

Special seals are available on request. Franke offers Viton seals for high temperatures or aggressive media.